



ARKANSAS'S FOREST FACTS

"The Natural State"

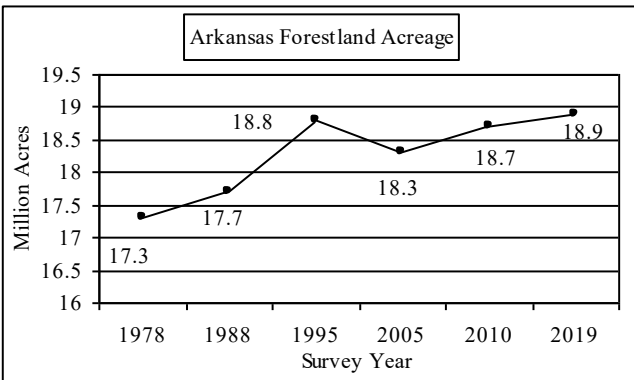


The 2019 Forest Survey

The Forest Inventory and Analysis (FIA) program of the USDA Forest Service Southern Research Station has been conducting statewide periodic timber surveys since the 1950s. In 1999, the Arkansas Department of Agriculture, Forestry Division joined the FIA program and began the first ever annual survey for the state. The information for this current survey is derived from satellite imagery and certified foresters collecting timber measurements from over 4,000 permanent research plots.

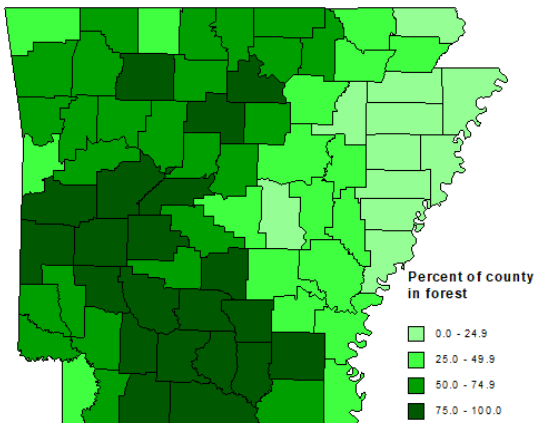
Forestland Area

Arkansas's forests cover 18.9 million acres or 56 percent of the State and contain 11.98 billion trees. During the 50's and 60's Arkansas lost almost 20 percent of its forestland. Since 1978, forestland has increased by 1.6 million acres.



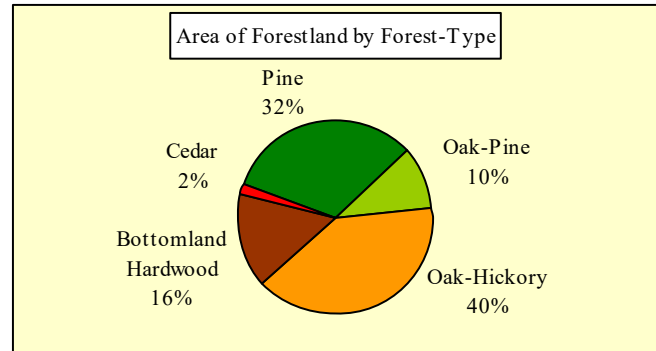
Forest Distribution

The Southwest, Ozark and Ouachita regions contain 88 percent of the forestland in the state. The most heavily forested County is Dallas (92%) and the least forested is Mississippi County (6%).



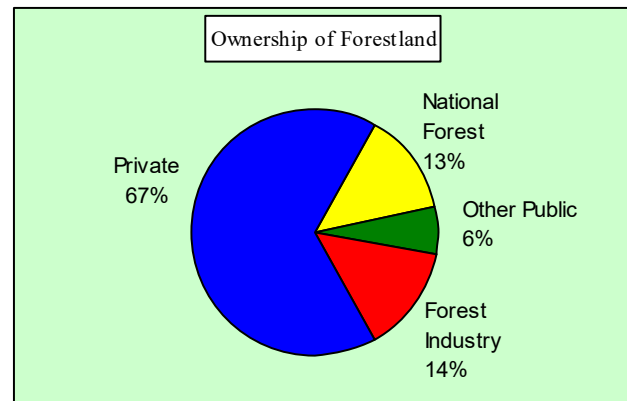
Forest-Type Composition

Most of the forest in the state is a hardwood timber type. Fifty-three percent of the pine forests are plantation.



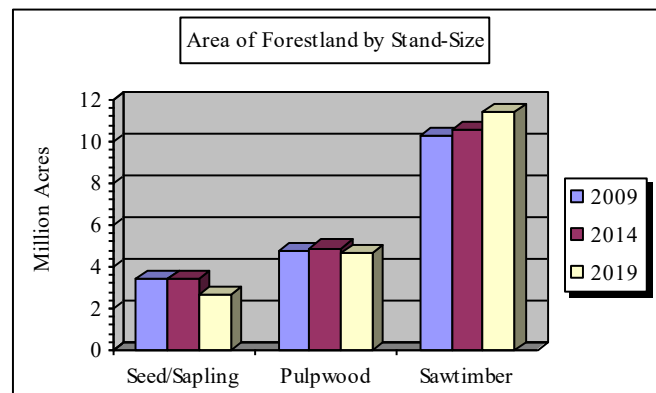
Ownership of the Forest

Arkansas contains the largest National Forest area in the South with 2.5 million acres within the Ozark-St. Francis and Ouachita National Forests.



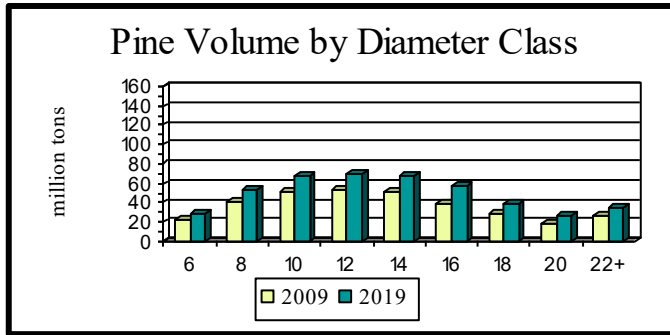
Stand-Size Distribution

More than half of the forestland acres in the state are sawtimber stands.

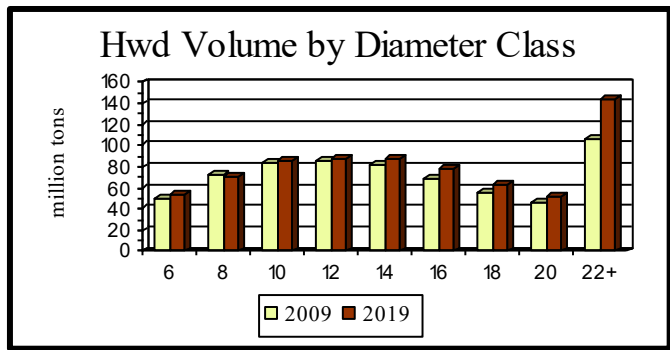


Timber Volume

Pine volumes account for 38 percent of the state's total tree volume.

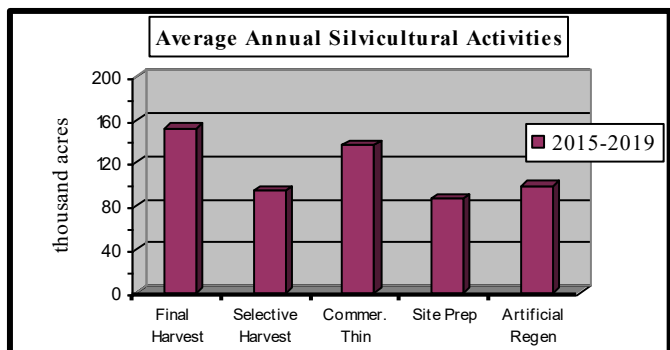
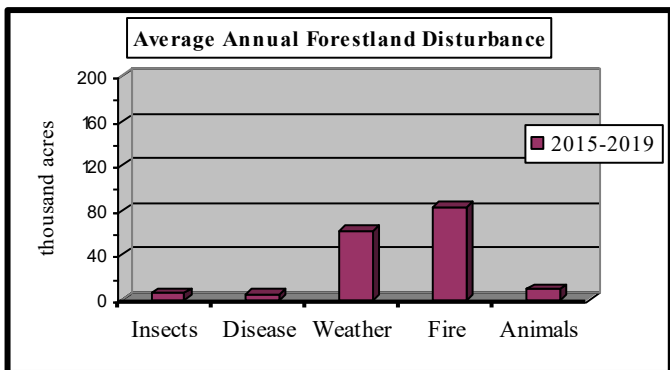


Hardwood volumes account for 58 percent of the state's total tree volume.



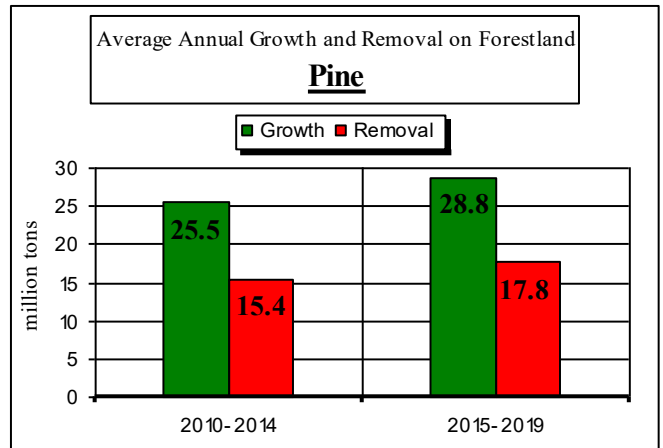
Disturbances

A Disturbance is an event which affects or kills at least 25% of the trees in an area. During the 2019 survey period, 89% of the annual weather disturbances occurred in hardwood forests, 51% of the fire disturbances occurred in pine or pine/oak.

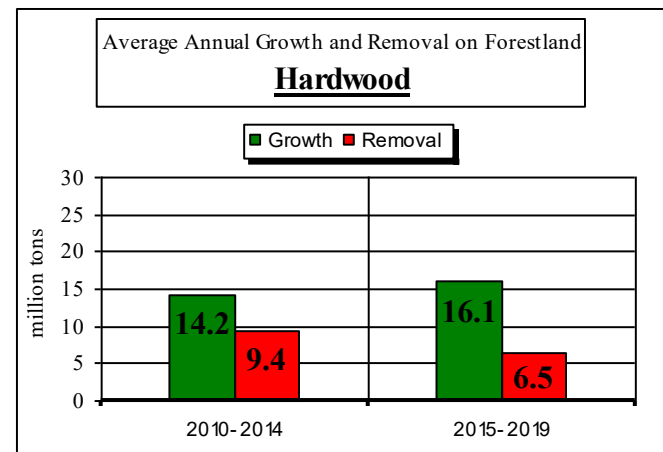


Growth and Removal

The 2019 survey period has shown an average annual increase in Pine timber growth and a decrease in removals. The growth/drain ratio is 1.6 for pine.



The volume figures from the survey shows hardwood timber is growing faster than it is being removed. The growth/drain ratio is 2.5 for hardwood.



For more information contact:

Arkansas Department of Agriculture
Marketing & Communications
1 Natural Resources Drive
Little Rock, AR 72205
agriculture.arkansas.gov
(501) 225-1598
marketing@agriculture.arkansas.gov



Related Links:

Southern Research Station

<https://www.fs.usda.gov/srsfia/states/arkansas.shtml>

FIA Data and Tools

<https://www.fia.fs.fed.us/tools-data/index.php>

SRS Publication Search

<https://www.srs.fs.fed.us/pubs/>



The Arkansas Department of Agriculture offers its programs to all eligible persons regardless of race, color, national origin, sex, age or disability and is an Equal Opportunity Employer.